



THE GIRL PATHTM

An EMpower Program Tool:
Engaging Girls Every Step of the Way



The Girl PathTM

The Girl Path tool was developed for a variety of uses by EMpower and our grantee partners in five world regions.

For more information, or to download the illustrations presented in this document, please visit www.empowerweb.org.

created by Cynthia Steele & Andrea Lynch,
EMpower—The Emerging Markets Foundation

illustrations and design by Lydia Holden,
Kahani Communications

Table of Contents

Instructions p. 4

Latin America p. 6

Africa p. 11

Europe p. 16

India p. 21

SE Asia p. 26

Instructions for Using The Girl Path Tool

What is **The Girl Path**?

The purpose of The Girl Path is to identify obstacles that prevent girls from fully participating in programs, and then to problem-solve about how these barriers might be addressed (removed or reduced).

The Girl Path lays out four* different spaces where girls may face obstacles to engaging fully in programs.

IN HER HEAD

What self-doubts, fears, or perceptions might keep her from participating? What are the voices inside her head saying that might hold her back?

IN HER HOME

Whose permission does she need to participate? What responsibilities or chores does she have, or that she must work around, to be able to participate? Do parents, brothers, or other family members need to be involved so she can come for the first time and then keep coming?

IN HER COMMUNITY

How does she get to the program site? Who and what might she meet on her way (is she safe)? How might members of her community react to her participation (who might resist, who might support her)?

IN THE PROGRAM

Do the hours and location enable her to participate? Does she feel welcome? Is the curriculum designed with her in mind: Is she getting something valuable from her time and effort? Are the trainers and staff members inclusive and supportive?

*AFTER THE PROGRAM

Optional, fifth space to assess: What support does she need after leaving the program to make the most of all she gained and learned? For example, strategies to keep in touch, monitor progress, and offer support if needed can be explored here.

How to Use **The Girl Path**:

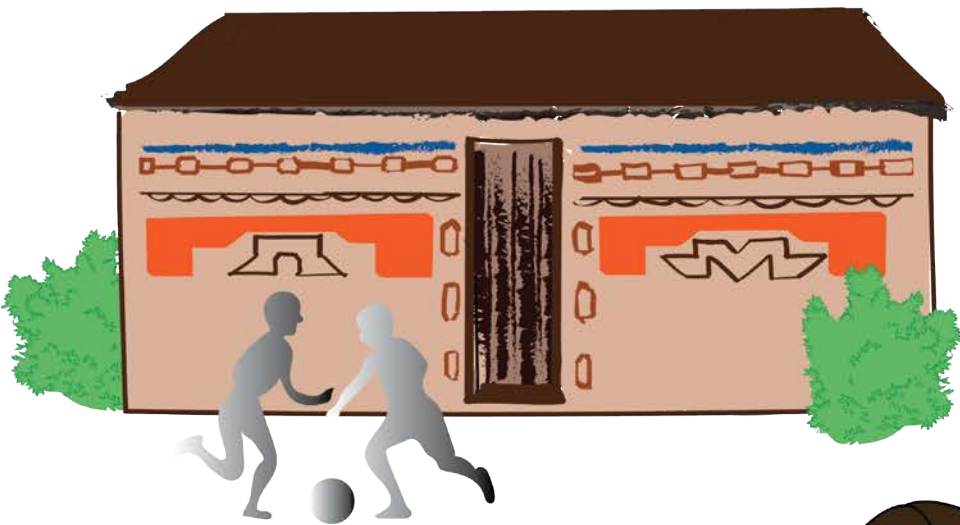
There are various ways to use this tool. The general approach is to:

- 1** Use the illustrations in this document, or print out more The Girl Path illustrations at www.empowerweb.org, for each of the four spaces—in her head, in her home, in the community, in the program—and tape them to a wall, leaving space around each illustration.
- 2** Using sticky notes or pieces of paper, identify and write down any barriers and obstacles girls in your community or program do, or likely might, face in each of the four spaces.
- 3** Identify practical solutions to the most pressing obstacles in each of the four spaces. These may be things that your program has tried and could improve upon, or do more often. New approaches worth trying may also surface while engaging with The Girl Path.

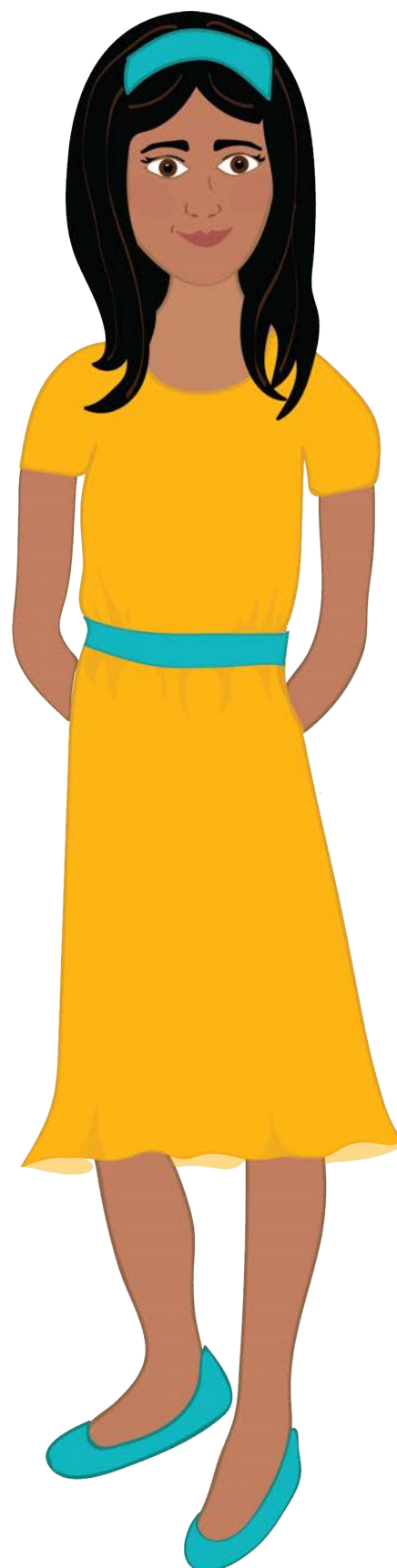
The Girl Path tool is customizable and can be used in a variety of ways by engaging different participants:

- A workshop or exchange among multiple organizations allows sharing of different solutions to address the various obstacles.
- Have girls and program staff complete the exercise separately and then share. This provides a way to compare staff and girls' perceptions, and to prioritize which solutions to try (that is, if the girls do not identify a specific issue, it likely does not need attention). This can also be done in a workshop with staff from various organizations working through The Girl Path, while girl participants use the tool separately, and then both staff and girls can come together to compare.
- A coed program can use The Girl Path to surface differences boys and girls may experience and, as such, contribute to a conversation about gender and social norms. The methodology involves girls looking at obstacles they face, while boys look at obstacles they themselves face (boy illustrations would need to be drawn). When each group is done completing their paths, bring them together to share their findings with each other.
- The Girl Path also can be used as an evaluation tool to see whether obstacles are removed or if engagement in programs has changed after implementing solutions. For example, programs can track if attendance improves, whether the drop-out rate has decreased, and if the program completion rates are higher. To do this, implement the tool at set intervals so progress can be documented and tracked.

The Girl Path: Latin America



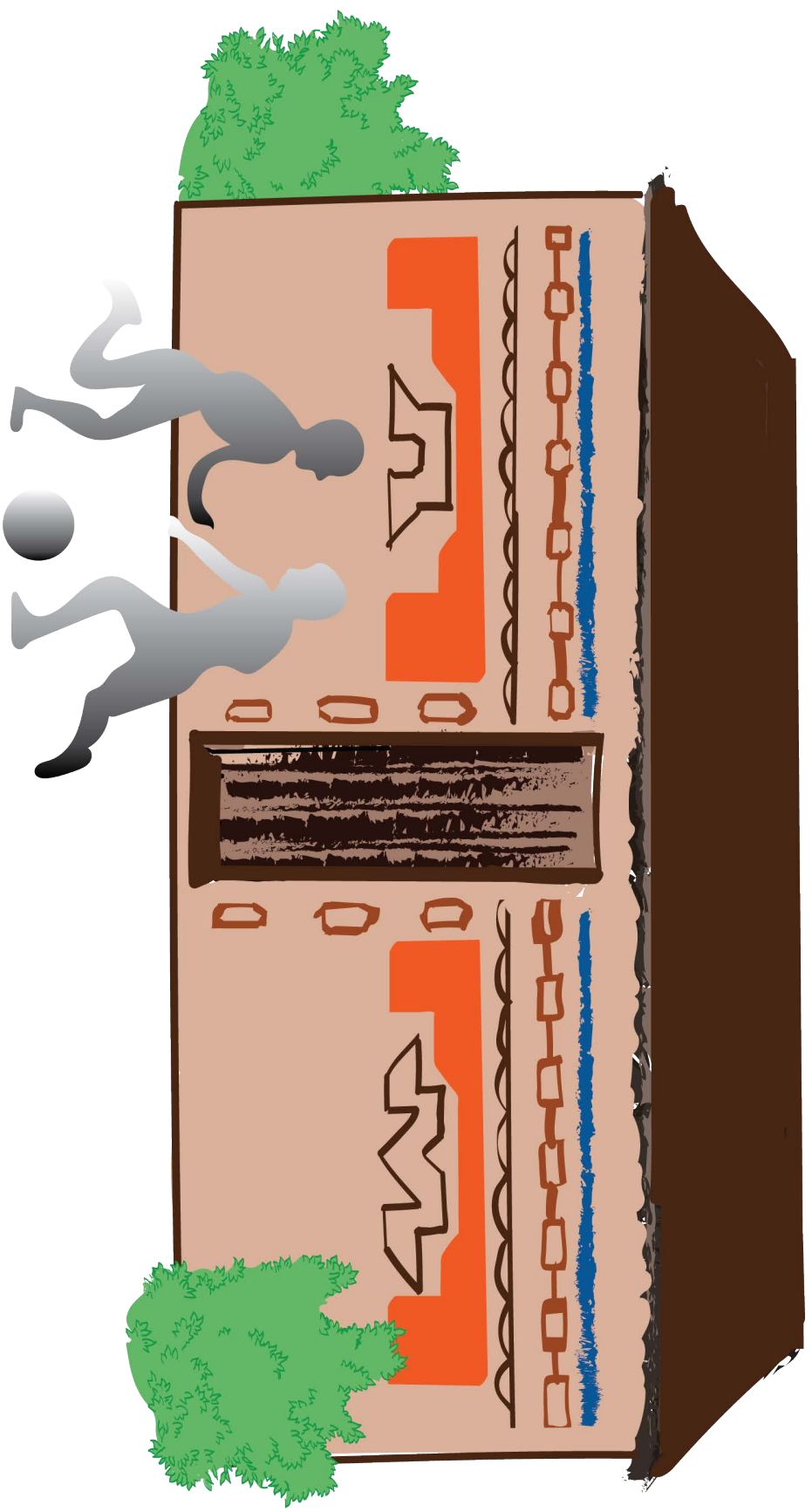
In Her Head



In Her Home



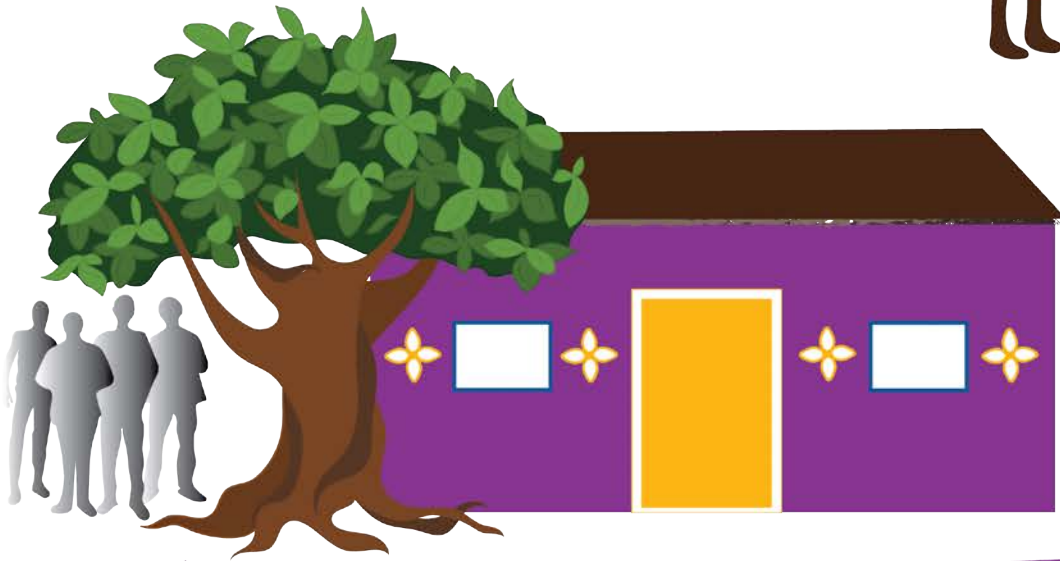
In Her Community



In Her Program



The Girl Path: Africa



In Her Head



In Her Home



In Her Community



In Her Program



The Girl Path: Europe



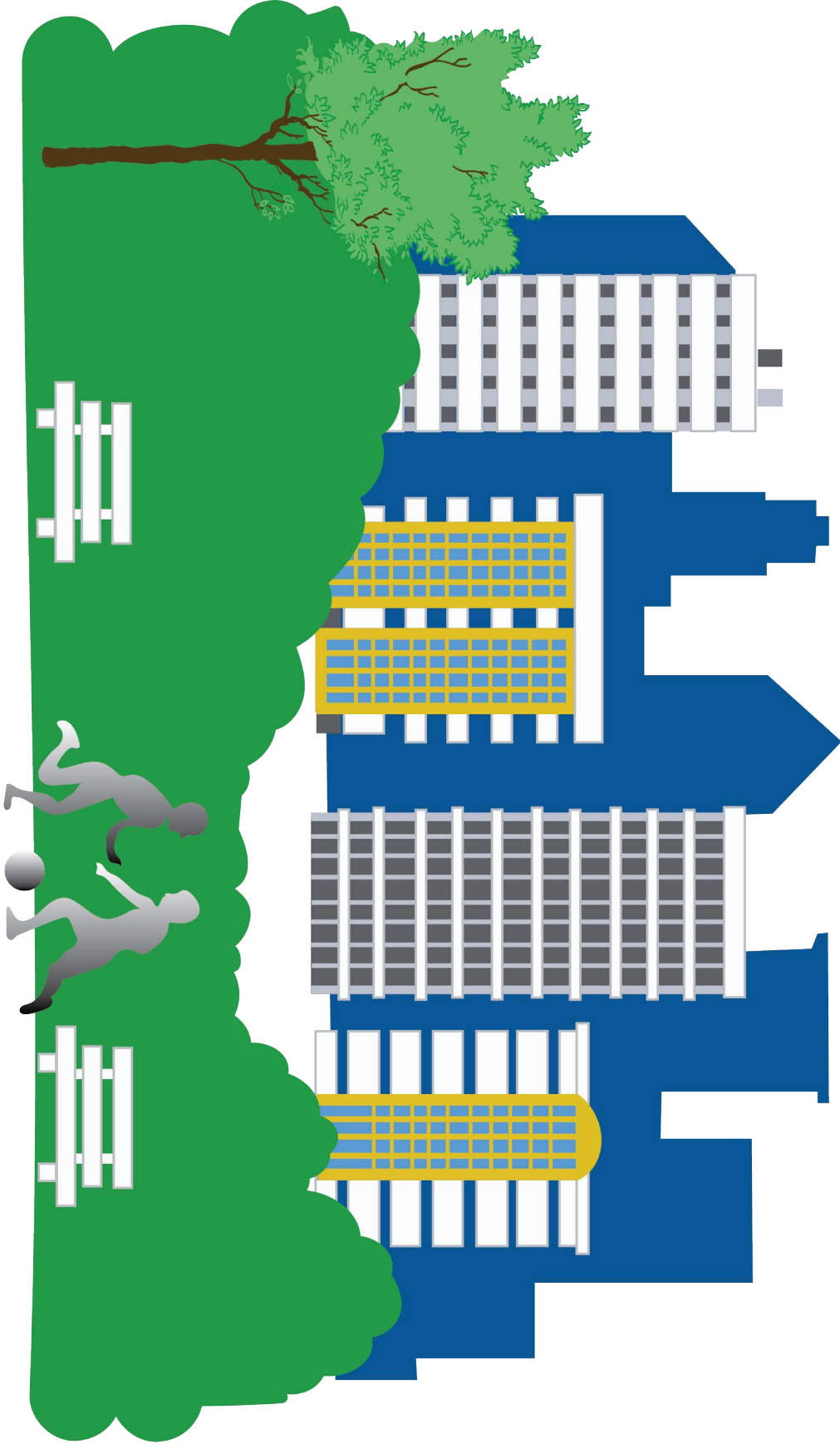
In Her Head



In Her Home



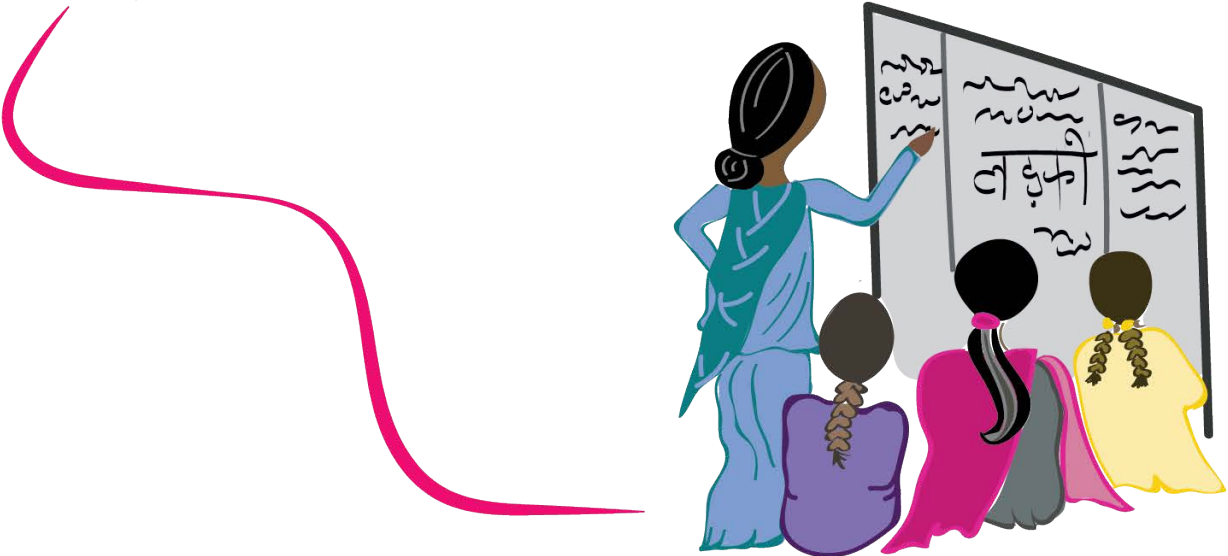
In Her Community



In Her Program



The Girl Path: India



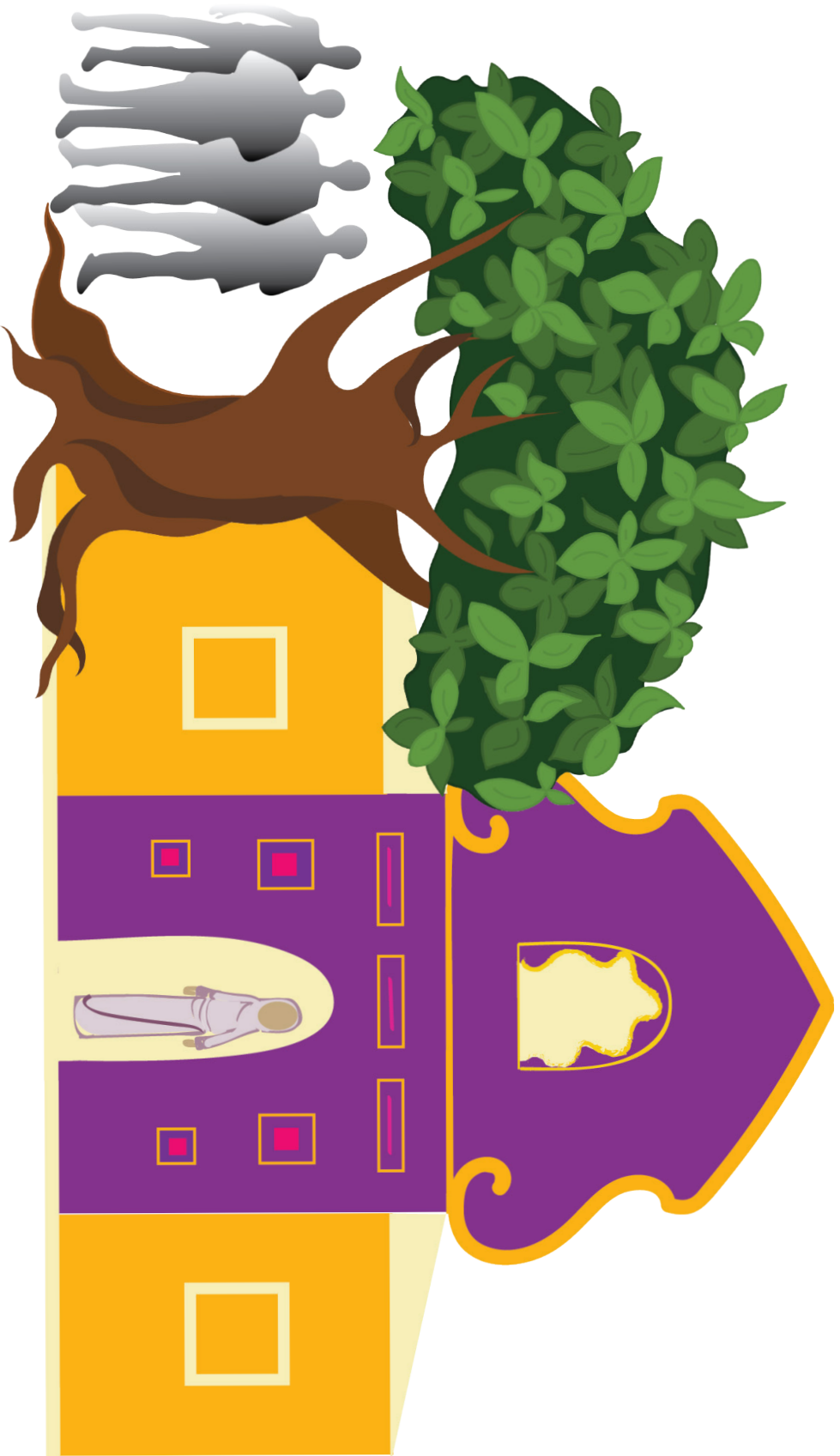
In Her Head



In Her Home



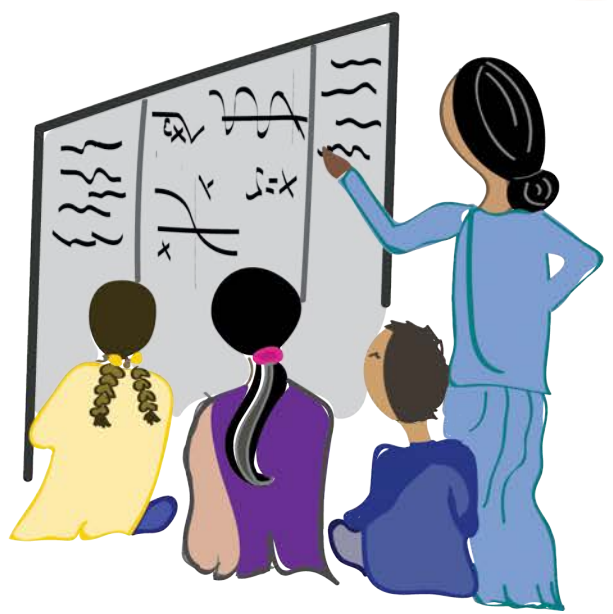
In Her Community



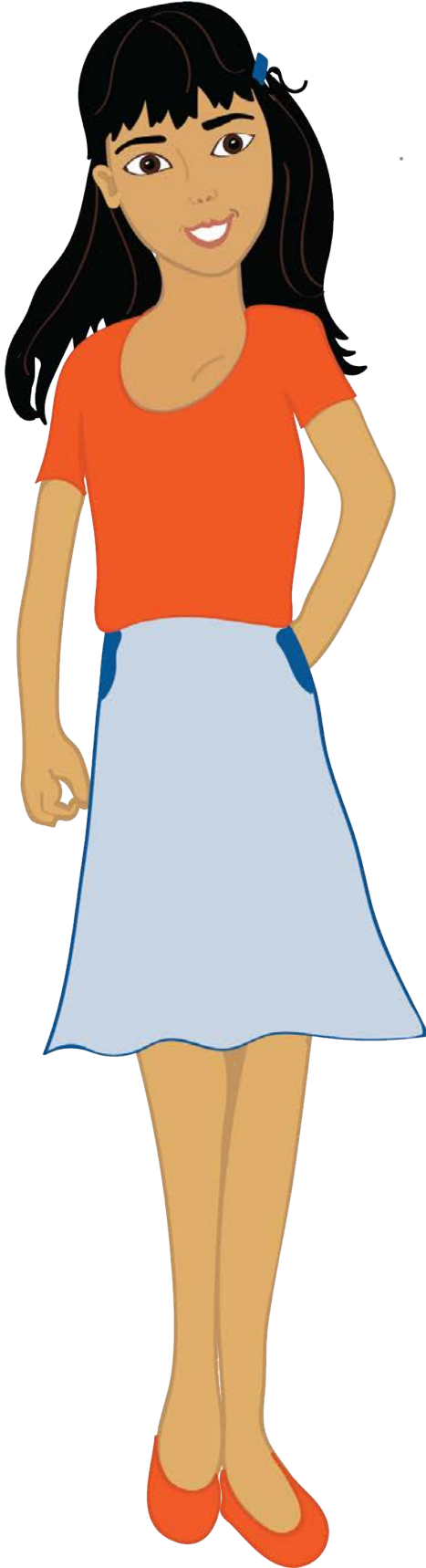
In Her Program



The Girl Path: SE Asia



In Her Head



In Her Home



In Her Community



In Her Program

